



June - July  
2017 Edition

## Kelvinites,

It's time for another edition of your favourite theatrical newsletter. We apologise for our tardiness this month – April and May seem to have slipped away and suddenly we're nearly half way through the year! And what a great half of a year it has been for Kelvin. Please enjoy the snippets inside written by your fellow members, and let's make the second half of 2017 just as good for Kelvin.

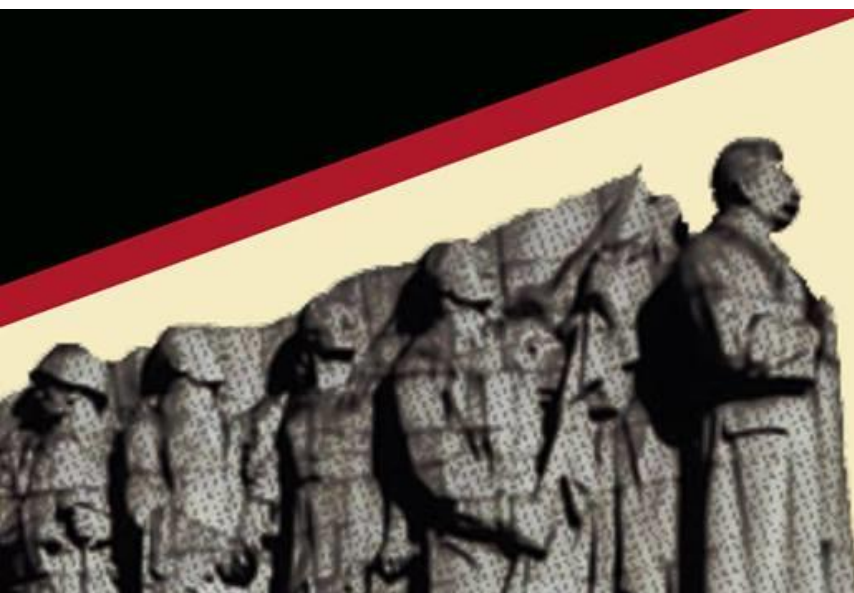
We would love to hear your suggestions, comments and ideas for future editions, so please email us at

[jester@kelvinplayers.co.uk](mailto:jester@kelvinplayers.co.uk)

Lucy and Roger

## In this edition, you'll find:

- Message from the Chairman
- Directors Review – '*Beaux Stratagem*'
- New members
- '*A Sense of Place*' – Where are we??
- '*A View from the Bridge*' Update from Ralf Togneri
- Observations from the 'Chair'
- Rehearsed Readings – Launch night info !
- Dates for your diary
- David Higson – Information on his Memorial Fund



# A SENSE OF PLACE

11-15 July 2017



# Captain's log...

Hello and welcome!

It seems ages ago now, that Martin Walsh's production of *The Beaux' Stratagem* was built, presented, struck, breakfasted and as I write, the Rose Bowl adjudication is scheduled to be read on 7<sup>th</sup> June. Thus endeth another amazing production. It was great to see more new members being cast (as well as some 'older' members!) for this romp of a comedy, deftly adapted/edited by Martin. It was also good to see new and old on the Tech Team taking up new challenges. Special mention must go to Geoff Collard, who in the absence of offers from elsewhere took on the roles of Production Manager, Lighting Designer, Stage/Props Manager and Programme Designer. He's now taking a well-earned break in France for a month (especially after not being able to get away straight after the production because of Election volunteering). I must also mention Anna Friere Camacho who, in her first role for the company and her first time ever as DSM, went the extra mile, attending every rehearsal, reading in for missing cast members and running the book and I think lights on occasions through show-week. A stunning entrance into the life of a Kelvin member. (Please stay!!!)

Josh Cooper's mysterious devised play has now been named – 'A Sense of Place' and I think is now on yet another break from rehearsals whilst the script is finalised. Now in my day you started the rehearsal with a script already written, but oh no that's not good enough for Mr la-di-dah Joshua Cooper, with his Assistant Director, Nicola Scwoon ... Schowder ... Schoonde ... Rope and not one, but two dramaturgs, Anna Marshall (welcome back Anna) and Tim Whitten (hello AGAIN!). It's promising to be a fine piece of theatre. By the time this Jester is published, the production will have already had its first outing, promoting itself and of course Kelvin Payers at the Bristol Old Vic as part of BOV's Bristol Open Stage event on 29<sup>th</sup> May.

I mentioned, at the AGM, my plans to create an extension to the Wesley Road area of the Studio including a new modern but sustainable entrance. Well if the Old Vic and the Colston Hall (or whatever it will be called) can do it why can't we. Well, one reason might be because we don't have enough money. Find my article inside this Jester and come along to the meeting on 23<sup>rd</sup> June.

On the Green Theme, I will have recently met with a few members who have expressed an interest in coming up with ideas to make us greener. More about this in future editions. We can all do our bit by properly recycling all our waste. That means any recyclable 'dry' waste (cans, bottles, paper, plastic, card and clothes) can all go in our dry-recycling bin outside, any food waste will have to be thrown away in general waste because we're not in a position to make sure it all goes out to be recycled weekly – which would create a health/hygiene/aroma hazard! All other waste should go into general rubbish.

Finally, lots of you will have noticed some photos of past productions appearing on the Members' facebook group. Assisted by Robin, I have been scanning in all the archive records so we have a digital record and people can see and investigate our past productions, rather than them all be locked away in cabinets in the Morris Room. I'll soon be publishing the Dropbox site address, so you can all get to see it ... not only photos but programmes, press releases, clippings, and other interesting stuff. So far, we've done from 1929 to 2001. 72 years' worth may sound impressive, but for the first 40 years or so we only did one or two productions each year. In 2001, I think we did six productions and have a lot more photos and documents.

If you're registered to vote in the General Election, USE YOUR VOTE WISELY. If you're not registered to vote, WHY NOT?!!! May the candidate with the most votes win!

Lots to look forward to, lots to keep us busy, lots of Rehearsed Readings coming up (See inside)

Get involved, get busy, get happy!



**Jonny Wilkinson**  
**Chairman**  
[chair@kelvinplayers.co.uk](mailto:chair@kelvinplayers.co.uk)

# THE BEAUX' STRATAGEM

## A Few Random Thoughts from the Director

Why a 300+ year old play? It was quite clear in my mind that this was more than a museum piece. I felt it could engage and entertain a present day audience as well as presenting a worthy challenge to those involved. However, it was a play set in a particular place and time and would require an understanding



of the early 18<sup>th</sup> century world. In the early stages of planning, I was grateful for Bob Harvard's volunteering to undertake much of the background research into the period, which helped inform me and the cast in understanding the characters and the world they inhabited.

The script was published before its first

performance. But there were later published editions of the play which showed that the play had been cut in subsequent productions and it was these editions that formed the basis of the script we used, along with a few other minor interventions of my own to keep the pace moving.

There were a few technical demands particularly in terms of period set and costumes, a fight scene with swords and a final dance. Early on Tim Whitten bravely put himself forward to design the fight and coach the participants. And when rehearsals started Martha Graham volunteered to choreograph the final dance as well as compose Archer's song in Act 1.

Bronwen Grover came up with a set design which created the right atmosphere and enabled the busy comings and goings of the plot. And Jonny Wilkinson's support on set construction, along with help from his team, was invaluable.

Chrissy Fryers did a brilliant job providing costumes which evoked the early 1700s and matched each character superbly. As first-time Production Manager, Geoff Collard did sterling work and Anna Freire Camacho did a magnificent job as DSM. Neil Bonnett, with Paul Dyson's support, added an atmospheric soundtrack to the action.

The play demands a large cast but after a somewhat protracted period of auditions and call backs, and after cutting one part and turning one male part into a trouser role, the casting was complete. And what a cast they turned out to be! I really couldn't have hoped for a better group of individuals to work with. I think they did themselves and Kelvin proud.

And in the end, I think we achieved what I thought was possible. With a good sense of fun, hard work and plenty of creative energy, we engaged and entertained a 2017 audience with a 300+ year old play. And I was pleased, and I admit not a little relieved, to see such large and appreciative audiences!

My thanks to all who helped to make it possible!

Martin Walsh  
Director

## Building Development Developments

Planning permission has been granted for the building of our new extension and conversion of the front (Wesley Road) WC into a Disabled WC and an additional WC.

The TOTAL cost is anticipated to be **£34,000** including design, planning and build. At present, we're just short of 40% already in the pot but need to raise another £20,000 or so.

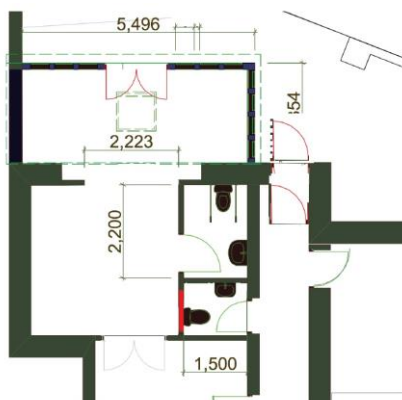
I'd like to get work started on the WCs ASAP, but we'll need to raise the remaining funds needed before we can get on with the build of the main extension.

We also need to provide additional parking (as our existing parking spaces will have the extension built on it. We don't need planning permission to remove the wall alongside the Wesley Road pathway or a section of it but we would need permission to rebuild the big stone pillar further down. The plan is therefore to either shorten the wall remove half the top section of wall and the entire top section of railings or (and this would be neater) to remove the entire top section of wall and railings to the first wall spur. This would create more space for the bins, footpath and parking/loading area.

So on 23<sup>rd</sup> June at 7:30 in the Morris Room I'll have some pictures, figures, ideas and opportunities to ask questions and let us have your ideas for fundraising.

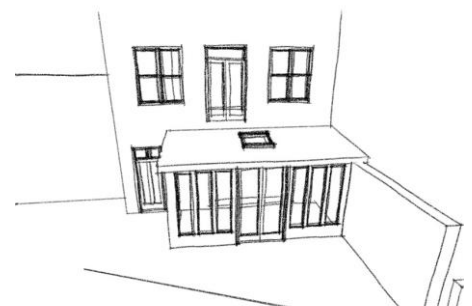
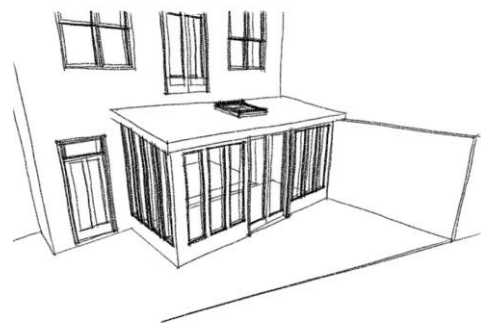
**Jonny**

**Chair person**



Floor Plan

New WC





## MEET SOME NEW MEMBERS

### Nico Smith

Nico has been a member before and really enjoyed it. She is keen to get involved with theatre again. Although her experience has mainly been as an actor, she has an interest in directing and set design.

### Elizabeth Madgwick

Elizabeth has recently moved to Bristol from London where she was an active member of theatre groups in Richmond and Twickenham over many years. She has experience in acting in a wide range of roles as well as Front of House, Bar, Box Office and ASM. Samuel Beckett is among her favourite playwrights and she would like to explore a diverse range of plays. She says she will bring energy, team spirit and commitment to anything she undertakes. She hopes that Kelvin may be able to offer some training in stage fighting!

### Ann Fielding

Ann has joined Kelvin for the writers' group and possibly to Direct and take part in rehearsed reading. She came to a "Monkey Trousers" performance and decided to join. Although she has not had much experience of writing plays, Ann has written a blog about the most down at heel road in London and a thesis about Marco Polo and Genghis Khan. Right now she's in a creative writing bootcamp run by her four year old 'Another story! Another story! About Captain Barnacles trapped in a shark'. Currently she is writing a play about someone trapped in a church.

### Mark Long

Although Mark hasn't had much experience of "treading the boards" as we old codgers like to call it, he has been doing improvisation over the last year and is keen to try his hand at acting in the more conventional manner. He says he will have a go at anything. He enjoys playing lots of sport in his spare time and also hiking.

### Chris Worthington

Chris has joined Kelvin after hearing about us from a friend. He has gained experience in writing and producing short plays during the last year. He would like to further his writing experience with Kelvin and is hoping to receive training in Direction.

### Josh Arbon

Josh joined Kelvin because he thought it looked like the most serious/high quality group in the area. He has acted in multiple genres of play and musical through his childhood until University. He has experience in designing, rigging and operating sound and audio FX. Though not an expert he also has experience in set builds/breakdowns painting etc. He appreciates how the success of a group is hugely dependent upon the drive of the members and he will give us 100%. As he works in wildlife film, he may be out of the country for some extended periods, but will know these well in advance and will not commit to anything he cannot carry through on. You sound like our kind of guy Josh !!

### Phil Joyner

#### Membership Secretary

kelvinplayers\_membership@hotmail.com

# The Devised Play: Update from Josh Cooper, Director

## A SENSE OF PLACE

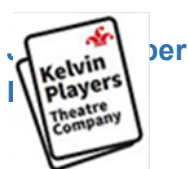
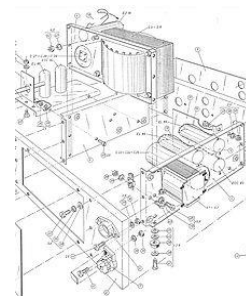
Kelvin's first ever Devised play is taking shape well and I write to you a couple of days before the performance of a sneak preview at the Bristol Old Vic Open Stage event which is an exciting opportunity to get some feedback on the style of the piece and show some new audiences what we can do. It also gives our fantastic cast the chance to tread those hallowed boards which is just reward for their hard work and creativity throughout the process.

Our Dramaturg par excellence Tim Whitten has been crafting an epic of Shakespearian complexity and when I've let him out from the cupboard under the stairs he has responded to my comments to "make it better" with good humour.

The script will be finished around the time that you read this and then from mid-June we embark on our final rehearsal period to polish the play to performance standard for our July run.

Our technical crew are also getting stuck in with meetings and discussions on important philosophical questions like "How does an actor throw a pair of trainers up in the air in a theatre without breaking any lights?" and we have an exciting set design courtesy of Bronwen Grover and some intriguing ideas for lighting and visual effects from Neil Bonnett, as well as several newer members helping out in other roles which is all very exciting.

It currently feels a bit like the calm before the storm as we break from rehearsals as the script is coming together, but the cast and crew are very excited to bring this unique Kelvin show to fruition. A special mention to my Production Manager Nicky Schoonderwoerd who took on this role for the first time and has had to deal with various issues whilst facing challenging times at work and preparing for her epic non-stop walking of the Cotswold Way. Ever up and onward.



# A VIEW FROM THE BRIDGE

**Ralf Togneri**

**Director**

Following on from the very enjoyable Launch for “A View From The Bridge” at the beginning of May a quick reminder for those who want to propose ideas for set, lighting and sound to let me know by the end of the month with the pitching night on 6<sup>th</sup> of June.

The play will run over two weeks from 11<sup>th</sup> to 14<sup>th</sup> and 18<sup>th</sup> to 21<sup>st</sup> October.

## READ THROUGH AND AUDITIONS

The read through is on SUNDAY 18<sup>th</sup> JUNE in the MORRIS ROOM from 7.00pm onwards.

Auditions are on TUESDAY 27<sup>th</sup> JUNE and THURSDAY 29<sup>th</sup> JUNE in the MORRIS ROOM. Actors can sign up at the read through. Please sign up for the main role only for which you wish to be considered. I have left a gap between Read Through and Auditions to give interested actors a chance to read the whole play.

The script is available through the MEMBERS section on the website. The auditions pieces are also available on the website - link: [www.kelvin-member.co.uk/viewfromthebridge](http://www.kelvin-member.co.uk/viewfromthebridge)

## THE PLAY

The play is set in the early 1950s in Red Hook, a slum area by the riverside in Brooklyn, populated mainly by immigrant Italians. It tells the story of one man who destroys himself in the clash of his personal passions with the cultural rules of his immigrant community.

Eddie Carbone is a second generation Italian-American who works in the docks. He agrees to shelter his wife's cousins, Marco and Rodolpho, who are illegal immigrants from Sicily. Trouble begins when his wife's niece, Catherine, who has been brought up by Eddie and wife Beatrice, falls in love with Rodolpho. It leads to jealousy, anger and finally, as in a Greek tragedy, the destruction of the man.

## CHARACTERS

I have indicated the Playing Ages of the character's below. To play a 16 year old for example you need to have experienced being 16 and are able to reflect on that experience, so someone playing a 16 year old would be at least 18, more likely in their 20s. Likewise for the other playing ages. It is not the age of the character.

### MAJOR ROLES:-

|                    |                     |   |
|--------------------|---------------------|---|
| Eddie Carbone -    | playing age 40 – 45 | Eddie is strong and muscular from his hard physical work  |
| Beatrice Carbone:- | playing age 36 - 45 | Eddie's wife – a stay at home housewife                   |
| Catherine -        | playing age 16 – 20 | Beatrice's niece – has led a sheltered and protected life |
| Alfieri -          | playing age 50 – 65 | a lawyer from an immigrant family                         |
| Marco -            | playing age 28 – 35 | the elder of Beatrice's cousins and an illegal immigrant  |
| Rodolfo -          | playing age 20 – 25 | Marco's younger brother – illegal immigrant               |
| Louis -            |                     | playing age 30 plus A dock worker                         |
| Mike -             |                     | playing age 30 plus A dock worker                         |

### MINOR ROLES

# Rehearsed Reading Update **Rick Proctor**

Dearest Kelvinfolk,

Yes, the time is nearly upon us for another one of those fantastical twice-yearly Rehearsed Readings ("RR") Launch Nights! The key date for y'all is **Saturday 22nd July** (7pm doors and bar, for 7:30pm start) - which you'll hopefully all have in your diaries already, but if not then hammer it in there right now. Just as you're reading this, I'll be in the throes of sorting everything out with all the potential directors currently chomping at the bit to present their RR - figuring out which directors can do which dates, lining it all up and so on. But hey, maybe YOU (yes, you) fancy directing something and we haven't already been in touch recently - and if so then heck, what are you waiting for? Get in touch now - my contact details are below. Naturally I can't guarantee that you'll be able to pitch your RR straight away this July, but there's always 2018 and it'll soon come rolling by - and I'll have to find the directors from somewhere, eh?

Meanwhile, if you'd like to act in a RR before the end of this year, then 22nd July is the key date to attend. If you're a new member, this event is a great way to get involved in something low on serious commitment but high on 'buzz' and general friendliness. If you're new to the whole RR thing, I'll do my best (through all the usual boisterous heckling, hehe) to explain the general gist of how it works - but in the meantime, you can have a read about RRs on the Kelvin Members website (the one you need a password for - or I guess you could even just do it the old-school way, and get in touch with me and ask).

The dates for the RR evenings being cast on 22nd July are: **2nd September, 16th September, 28th October, 25th November** - all Saturdays as per usual, and of course more dates there for the diaries everyone (whether you end up acting in them or not, since you're all going to come along and see them all eh?). As if you need any more enticement, you'll need to come along on 22nd July to find out who is directing what on which of these dates - as this is an incredibly high-profile Kelvin secret until then, oh yes.

Now, if you really absolutely can't make it on 22nd July but still wish to try and get cast in something, contact me a-s-a-p - making sure you **state which of those 4 dates you can and can't do** (and remembering that you have to commit to the whole entire day, 9am-10pm). I will then put your name on the casting reserve list, which we will turn to only for any parts not filled by attendees on the night - which means of course that this is no guarantee at all of casting, but at least it means you're in with a chance.

So, dearest Kelvin friends - until 22nd July then, I shall bid you adieu...oh and, by the way - if you're reading this before 17th June, then you're not too late to catch the last of the current half-season of RRs. Alex Needham and Rachael Lane are directing, so please come on down to Kelvin then too - 7pm doors and bar for 7:30pm start as usual, and if not 17th June then definitely 22nd July.



## Please note the following dates for your KELVIN Diary

### JUNE 2017

|                  |   |                    |
|------------------|---|--------------------|
| 6 <sup>th</sup>  | <b><i>A View from the Bridge</i></b><br><b>'Pitch' night for Set/Lighting/Sound</b> | The Morris Room    |
| 17 <sup>th</sup> | <b>Rehearsed Readings Performances</b>  | The Studio Theatre |
| 18 <sup>th</sup> | <b>Read Through – <i>A View from the Bridge</i></b><br>7.00pm onwards               | The Morris Room    |
| 23 <sup>rd</sup> | <b>Building Development:-</b><br><b>Question time with the Chairman</b>             | The Morris Room    |
| 27 <sup>th</sup> | <b>Auditions – <i>A View from the Bridge</i></b>                                    | The Morris Room    |
| 29 <sup>th</sup> | <b>Auditions – <i>A View from the Bridge</i></b>                                    | The Morris Room    |

### JULY 2017

|                                      |  |                    |
|--------------------------------------|--|--------------------|
| 11 <sup>th</sup> to 15 <sup>th</sup> | <b>Performances of '<i>The Devised Play</i>'</b>                     | The Studio Theatre |
| 22 <sup>nd</sup>                     | <b>Launch Night for 2<sup>nd</sup> Session of Rehearsed Readings</b> | The Studio Theatre |





## David Higson 1932-2017



### David Higson Memorial Fund

The above fund has been set up to raise monies for St Peter's Hospice in Brentry where David received first class attention and treatment.

Under charity law, Kelvin as a Registered Charity cannot make a donation to another charity. However any member who wishes to donate can do so by sending a cheque, payable to "David Higson Memorial Fund" to Mickey Barnard (a Kelvin Honorary Life Member) at 17 Falloden Court, Falloden Way, Henleaze, Bristol BS9 4HQ.

It is Kelvin's intention to host a concert given by 3 Men's Company, of which David was a member, in the early Autumn. [Details of this has yet be finalised however it is hoped that this will be a dinner event with opportunities for others to take part as well.](#)

---

